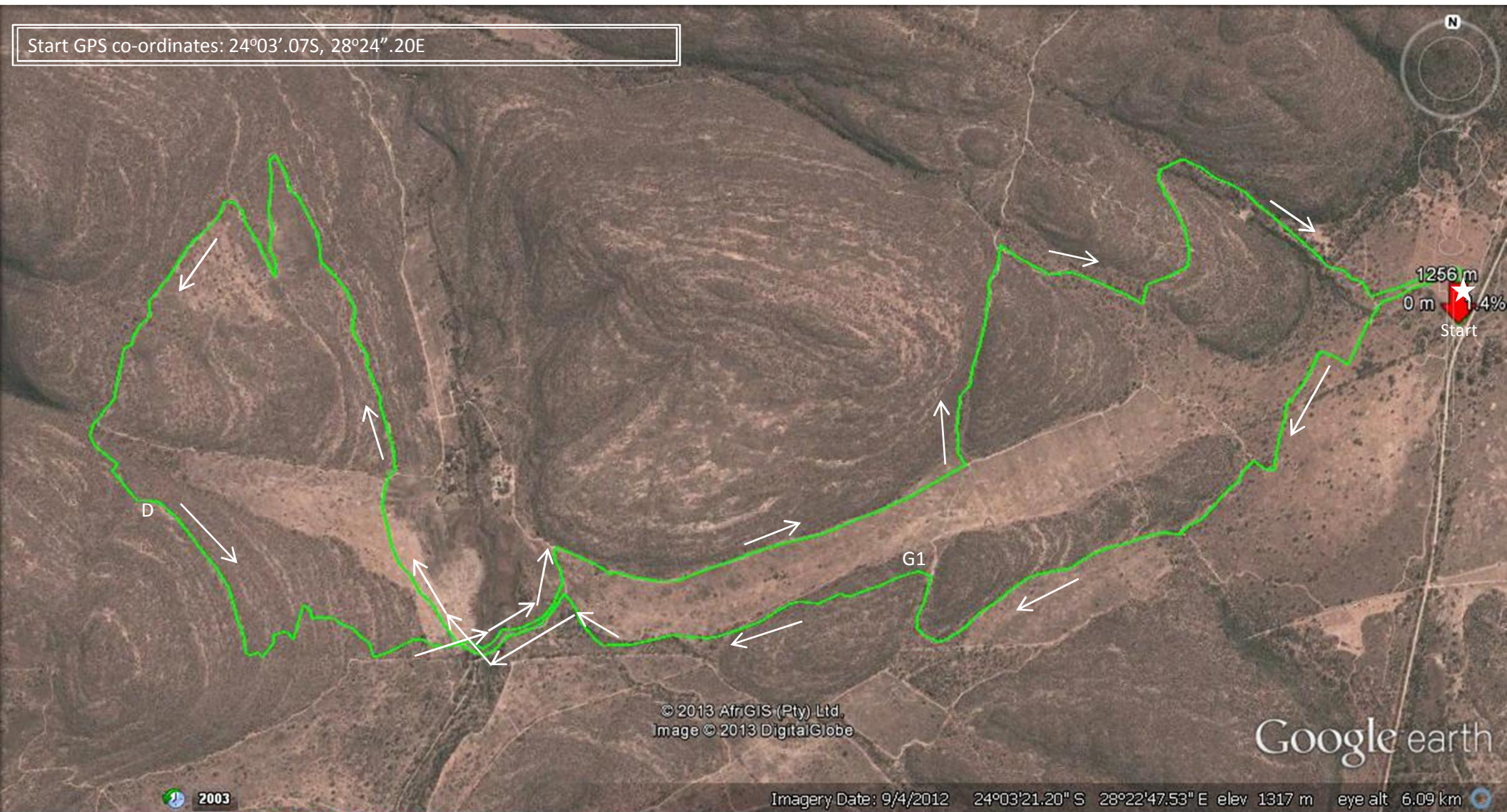


17km

Sequence of MTB trails: start, jeep track, G1, jeep track, D, jeep track, back to Start



Start GPS co-ordinates: 24°03'.07S, 28°24".20E



Graph: Min, Avg, Max Elevation: 1255, 1291, 1345 m  
Range Totals Distance: 16.8 km Elev Gain/Loss: 259 m, -260 m Max Slope: 10.6%, -15.3% Avg Slope: 2.6%, -3.2%

